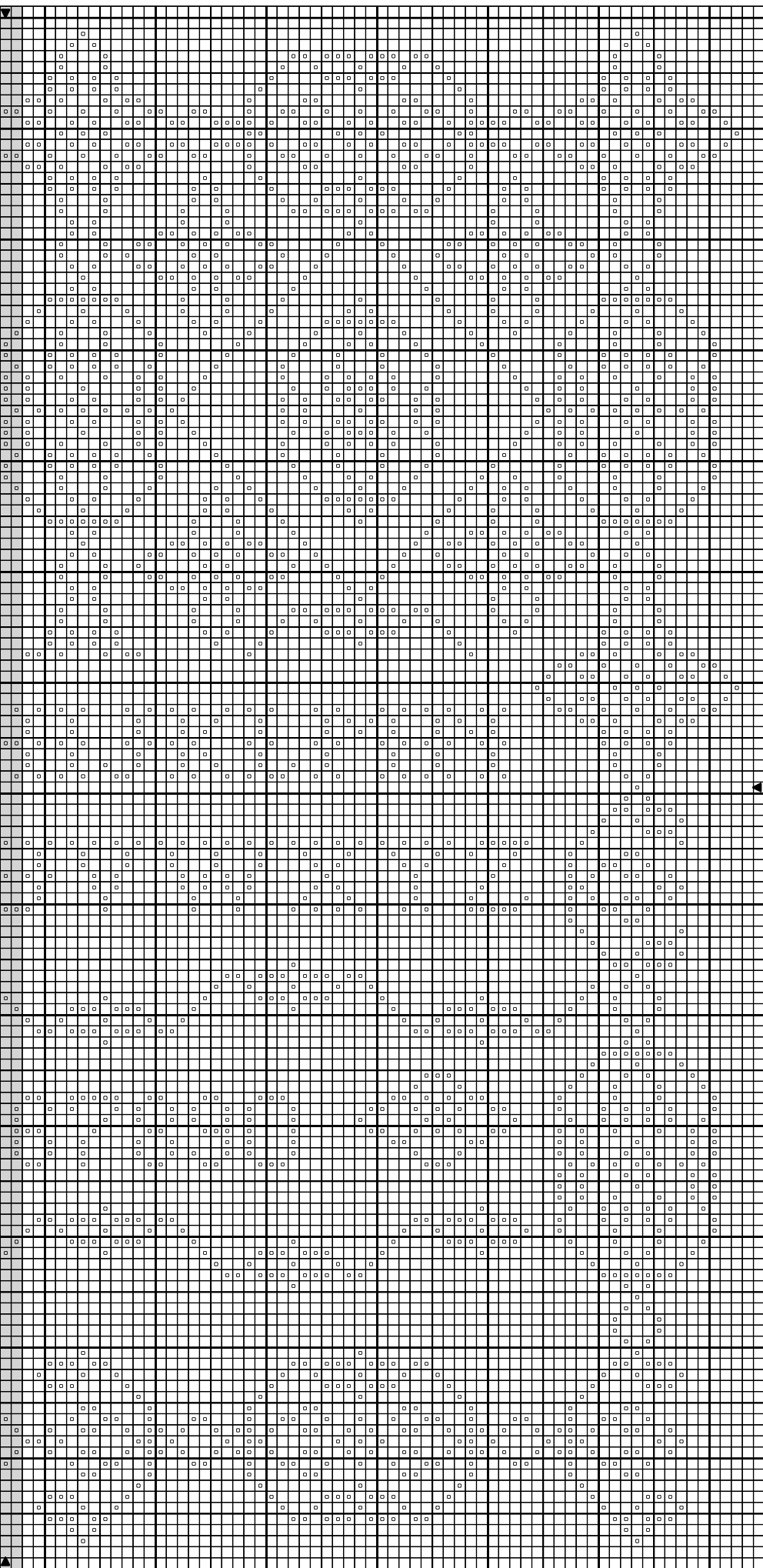


This image is a complex musical score for a sampler, titled "Sampler abc rouge". It is presented on a large grid background. The central element is a musical staff with a treble clef and a key signature of one flat (B-flat). The staff contains a sequence of notes, primarily quarter and eighth notes, with stems pointing upwards. Above the staff, there are several rows of musical notation, including what appears to be a piano (p) dynamic marking and various rhythmic or articulation symbols. Below the staff, there are numerous small, circular symbols, likely representing different samples or sounds, arranged in a pattern that corresponds to the notes on the staff. The grid is composed of small squares, and the overall layout is dense and detailed. There are small black triangles in the top right and bottom right corners of the grid area.



Sampler abc rouge



Sampler abc rouge

◦ Framboise DMC
 150

Dessiné par: grille gratuite mai 2005

Copyright © www.carinne.ht.st et Broder Ensemble